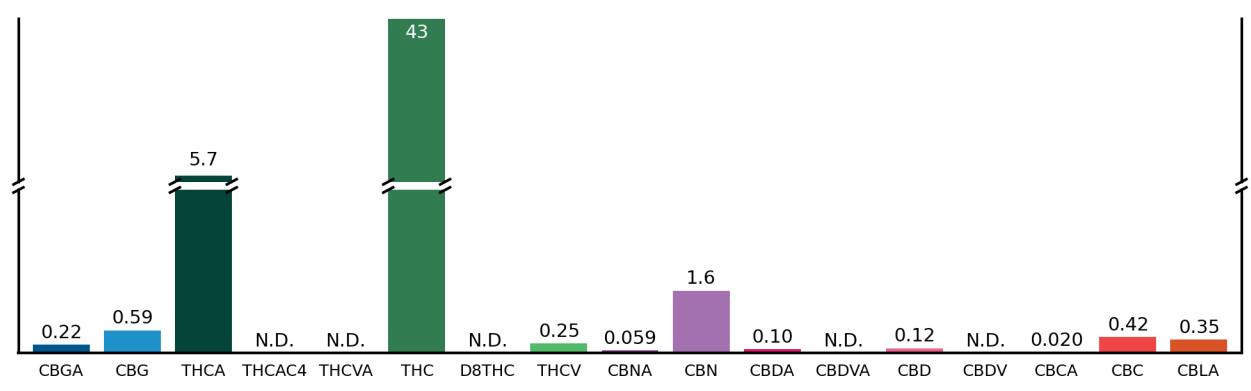


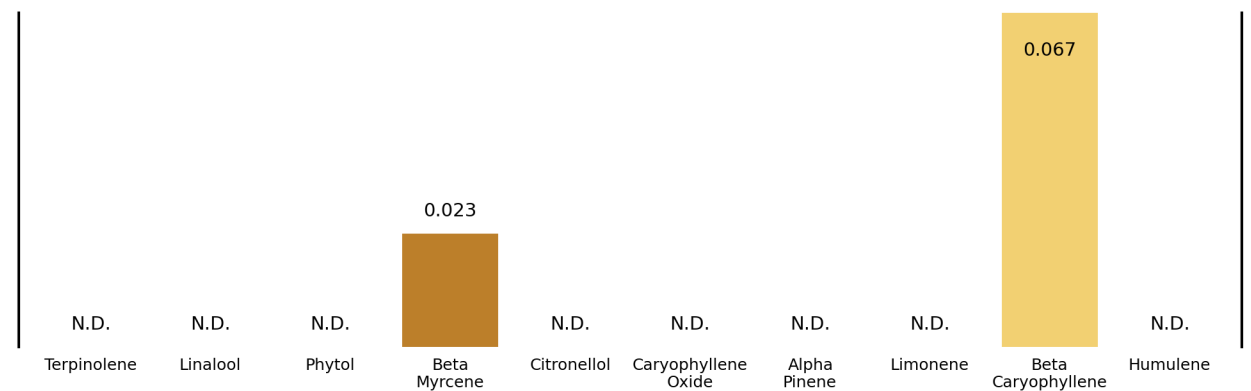
Holy Cannabis Oil

Customer: HCO Research		Test Site: SHL Berkeley		Instrument: HPLC-DAD-MS	
Test: Cannabinoid, Terpene Potency		Sample Type: Tincture		Customer's ID:	
Submitted: 2015-12-09		Analyzed: 2015-12-11		Reported: 2015-12-14	
				Sample ID: TIN61-1	
				Sample Mass: 0.9458 g	


Cannabinoids as Milligrams per Milliliter



Terpenes as Milligrams per Milliliter

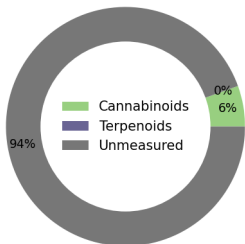


Sample Overview



Cannabis Infused Product

Holy Cannabis Oil



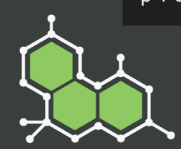
94% Unmeasured
6% Terpenoids
0% Cannabinoids

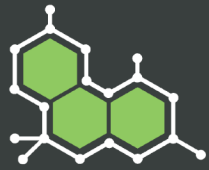
Sample Details

Pesticides: Not Detected
 Mycotoxins: Not Detected
 Density (g/mL): 0.9458

For more information about this report, including how to calculate your own approximate post-decarboxylate THC and CBD values, please visit www.steepphill.com/FAQ

This report and all information herein shall not be reproduced, except in its entirety, without the written consent of Steep Hill Halent. The report is for informational purposes only and should not be used to diagnose, treat, or prevent any medical related symptoms. Results are applicable only for samples tested, and for the specific tests conducted.

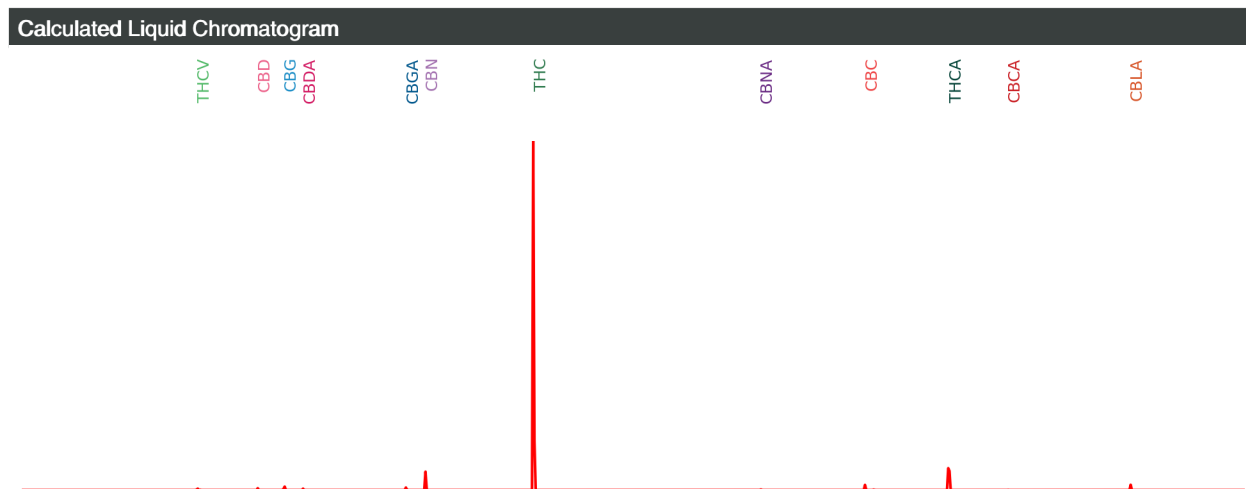
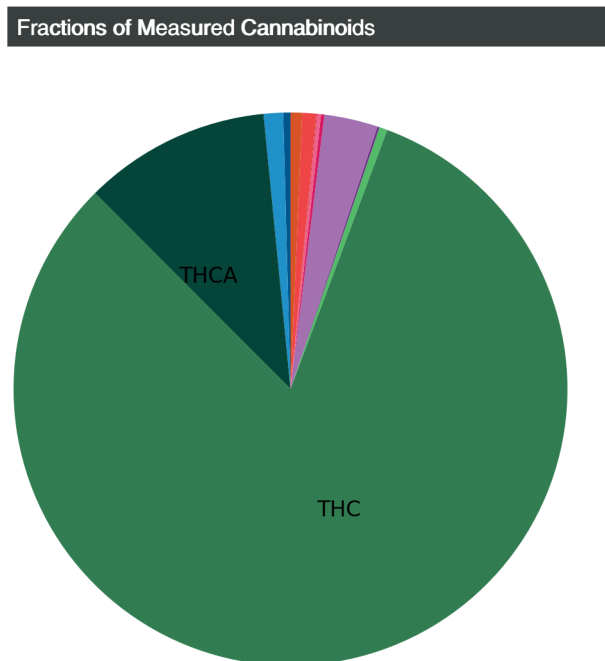




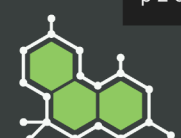
Holy Cannabis Oil

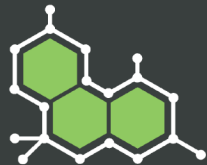
Customer: HCO Research		Test Site: SHL Berkeley		Instrument: HPLC-DAD-MS	
Test: Cannabinoid, Terpene Potency		Sample Type: Tincture		Customer's ID:	
Submitted: 2015-12-09		Analyzed: 2015-12-11		Reported: 2015-12-14	
				Sample ID: TIN61-1	
				Sample Mass: 0.9458 g	

Cannabinoid Profile		
Compound	mg/mL	mg/g
CBGA	0.22	0.23
CBG	0.59	0.63
THCA	5.7	6.0
THCAC4	N.D.	N.D.
THCVA	N.D.	N.D.
D9THC	43	45
D8THC	N.D.	N.D.
THCV	0.25	0.26
CBNA	0.059	0.063
CBN	1.6	1.7
CBDA	0.10	0.11
CBDVA	N.D.	N.D.
CBD	0.12	0.13
CBDV	N.D.	N.D.
CBCA	0.020	0.022
CBC	0.42	0.44
CBLA	0.35	0.37



This report and all information herein shall not be reproduced, except in its entirety, without the written consent of Steep Hill Halent. The report is for informational purposes only and should not be used to diagnose, treat, or prevent any medical related symptoms. Results are applicable only for samples tested, and for the specific tests conducted.



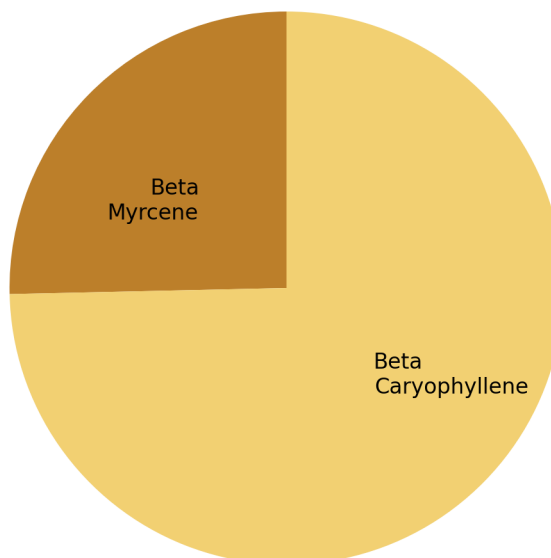


Holy Cannabis Oil

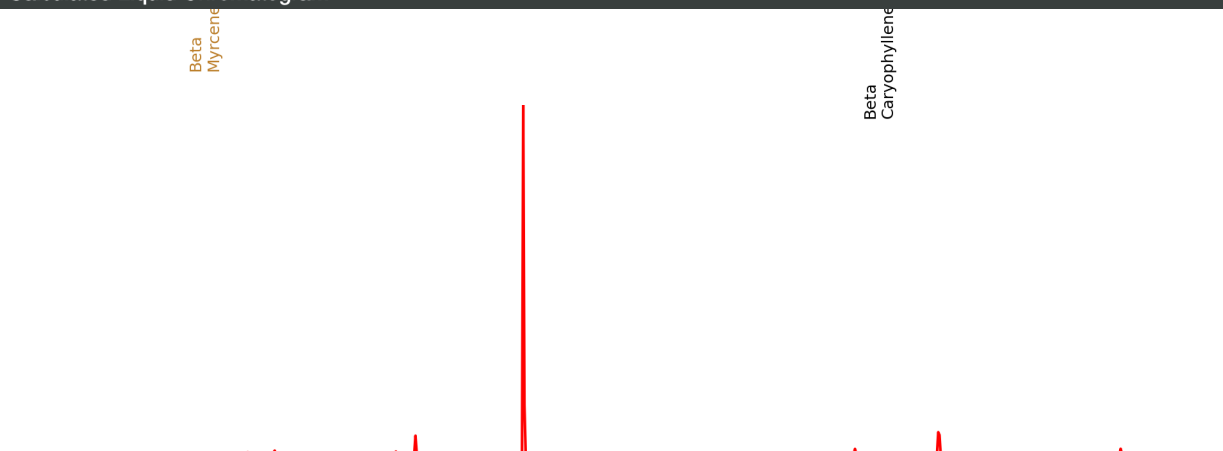
Customer: HCO Research		Test Site: SHL Berkeley		Instrument: HPLC-DAD-MS	
Test: Cannabinoid, Terpene Potency		Sample Type: Tincture		Customer's ID:	
Submitted: 2015-12-09		Analyzed: 2015-12-11		Reported: 2015-12-14	
				Sample ID: TIN61-1	
				Sample Mass: 0.9458 g	

Terpenoid Profile		
Compound	mg/mL	mg/g
Terpinolene	N.D.	N.D.
Linalool	N.D.	N.D.
Phytol	N.D.	N.D.
Beta Myrcene	0.023	0.024
Citronellol	N.D.	N.D.
Caryophyllene Oxide	N.D.	N.D.
Alpha Pinene	N.D.	N.D.
Limonene	N.D.	N.D.
Beta Caryophyllene	0.067	0.071
Alpha Humulene	N.D.	N.D.

Fractions of Measured Terpenes



Calculated Liquid Chromatogram



This report and all information herein shall not be reproduced, except in its entirety, without the written consent of Steep Hill Halent. The report is for informational purposes only and should not be used to diagnose, treat, or prevent any medical related symptoms. Results are applicable only for samples tested, and for the specific tests conducted.

